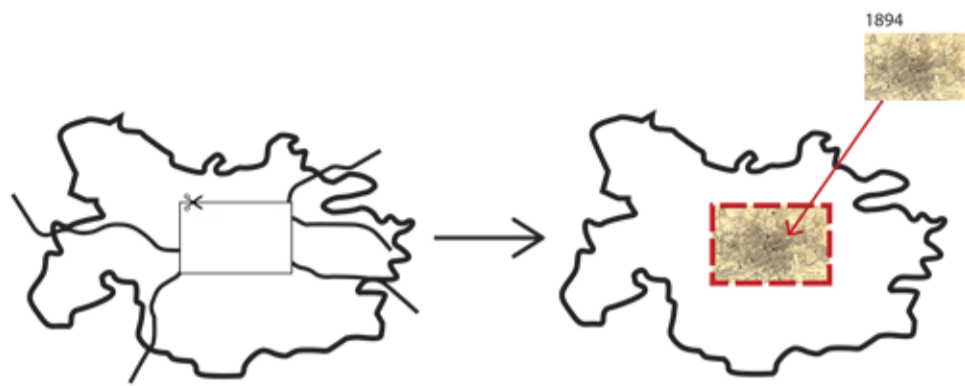


Scenario Network Analysis

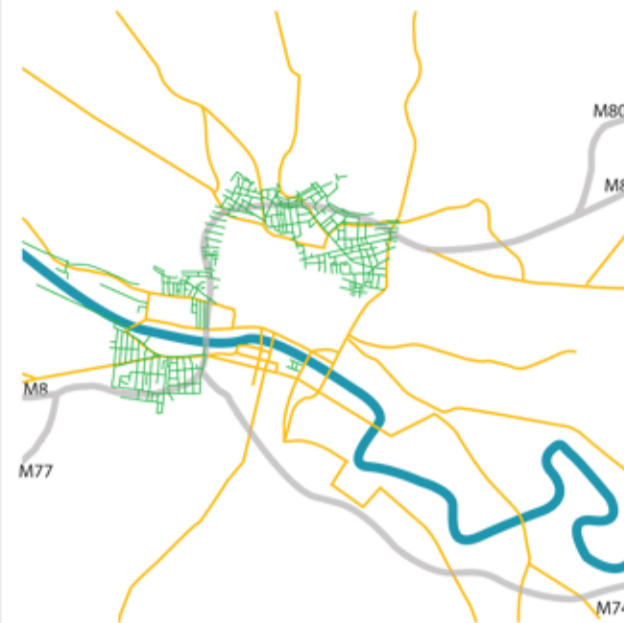
3_Conceptual Scenarios [What If ...]

1: ...we go back to the past?

TRANSPLANTING HISTORICAL STREET PATTERN



Scenario Diagram

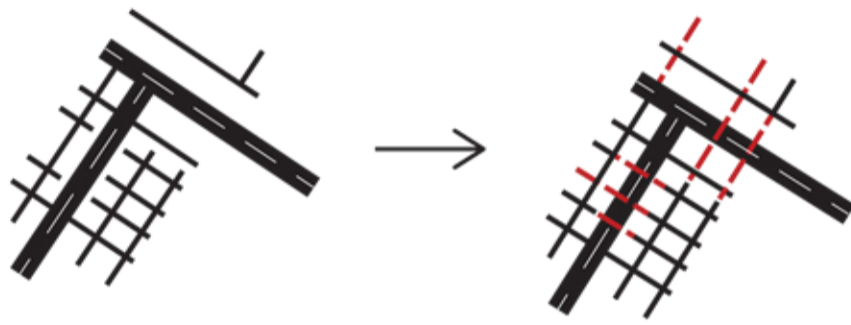


The city of Glasgow in 1894
-No motorway running through the city
-Fairly consistent, unbroken grid pattern

In this scenario the network of the existing central area of Glasgow is replaced with the network as it was in 1894, then linked to the surrounding current city. In 1894, no motorway existed in Glasgow so this scenario provides insight into **how the network might look if the M8 had never been constructed**. This will allow us to observe ways in which the M8 strengthens and/or weakens the network.

2: ...we bridge the 'gap'?

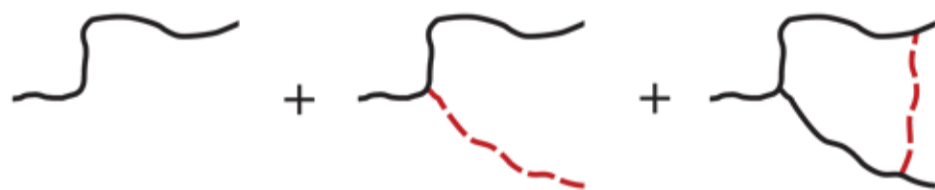
IMPROVING THE LOCAL CONNECTIVITY



In this scenario, connections are made across the M8, without altering the path of the motorway. Streets that come to dead ends at the motorway are linked to streets on the other side. Both the M8 and the network of the city are taken into consideration, to **cater to the demands of both local and global networks**.

3: ...it was a circular motorway?

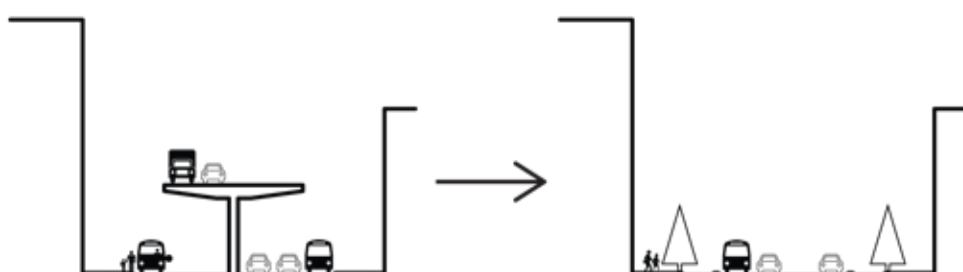
EMPHASIZING THE GLOBAL NETWORK



In this scenario, the M8 and the M74 are linked together by a motorway that crosses to the east of the city centre, completing a ring of motorways around the city. This concept is meant to **emphasize the global network of the city, catering to the strengths demonstrated by the M8**.

4: ...the M8 was a boulevard?

EMPHASIZING THE LOCAL NETWORK



In this scenario, the M8 is integrated into the existing network of the city, transforming it into a boulevard that circles around the city centre. Streets that cross the boulevard form nodes, and the boulevard is frequently linked to the surrounding network. This concept is **an exploration of what might happen to the network of the city if the local network was given greater importance than the global network**.